

Alleluya: A nywe werke

Ver.0.0.1-s

Bodleian Arch. MS. Selden B. 26, f.21v-22r

Transcribed by n. nakamura

Copyright (c) 2004 n. nakamura

1.2.3. Al - le - - lu - - ya, al - le - - lu - -

1.2.3. Al - le - - lu - - ya, al - le - - lu - -

1.2.3. Al - le - - lu - - ya, al - le - - lu - -

1.2.3. Al - le - - lu - - ya, al - le - - lu - -

7

ya, al - - le - - lu - - ya.

ya, al - - le - - lu - - ya.

ya, al - - le - - lu - - ya.

ya, al - - le - - lu - - ya.

13

Al - le - - lu - - ya, al - le - - lu - - ya, al -

Al - le - - lu - - ya, al - le - - lu - - ya, al -

Al - le - - lu - - ya, al - le - - lu - - ya, al -

Al - le - - lu - - ya, al - le - - lu - - ya, al -

Al - le - - lu - - ya, al - le - - lu - - ya, al -

Al - le - - lu - - ya, al - le - - lu - - ya, al -

20

le - - lu - - - ya.

le - - lu - - - ya.

le - - lu - - - ya.

26

1. A ny - we werke is come on³ honde
2. By Gab - ri - - el by - - gunne hit was
3. Nowe is ful - - fyled the pro - phe - cie

1. A ny - we werke is come on³ honde
2. By Gab - ri - - el by - - gunne hit was
3. Nowe is ful - - fyled the pro - phe - cie

31

A ny - we werke is come on honde
By Gab - ri - - el by - - gunne hit was
Nowe is ful - - fyled the pro - phe - cie

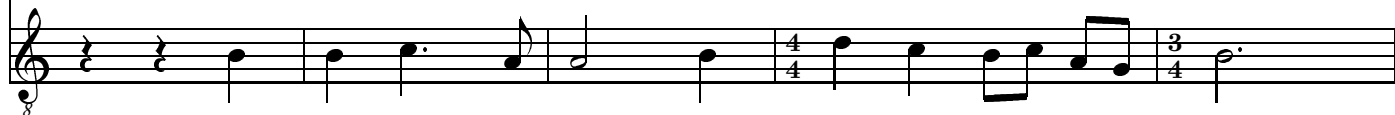
A ny - we werke is come on honde
By Gab - ri - - el by - - gunne hit was
Nowe is ful - - fyled the pro - phe - cie

A ny - we werke is come on honde
By Gab - ri - - el by - - gunne hit was
Nowe is ful - - fyled the pro - phe - cie

36



Þorw my3t and grace of Go - - dys sonde:
ry3t as the sunne shone thorwe the glas,
Of Da - uid and of je - - re - - mie



Þorw my3t and grace sunne of Go - - dys sonde:
ry3t as the sunne shone thorwe the glas,
Of Da - uid and of je - - re - - mie

41



Þorw my3t and grace of Go - - dys sonde:
ry3t as the sunne shone thorwe the glas,
Of Da - uid and of je - - re - - mie



Þorw my3t and grace sunne of Go - - dys sonde:
ry3t as the sunne shone thorwe the glas,
Of Da - uid and of je - - re - - mie



Þorw my3t and grace sunne of Go - - dys sonde:
ry3t as the sunne shone thorwe the glas,
Of Da - uid and of je - - re - - mie

46

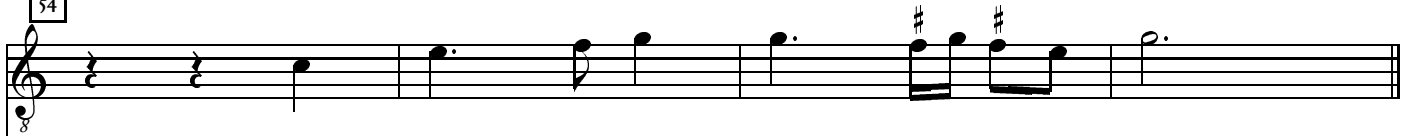


To saue þe lost of eue - ry londe, al - le - - lu - - ya.
Ihe - - su Cryst con - cey - ued was, al - le - - lu - - ya.
And al - so of Y - sa - - - ie. al - le - - lu - - ya.

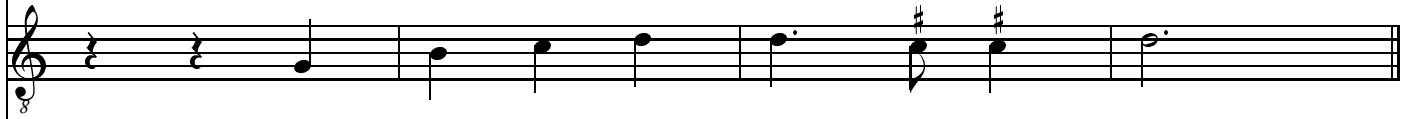


To saue þe lost of eue - ry londe, al - le - - lu - - ya.
Ihe - - su Cryst con - cey - ued was, al - le - - lu - - ya.
And al - so of Y - sa - - - ie. al - le - - lu - - ya.

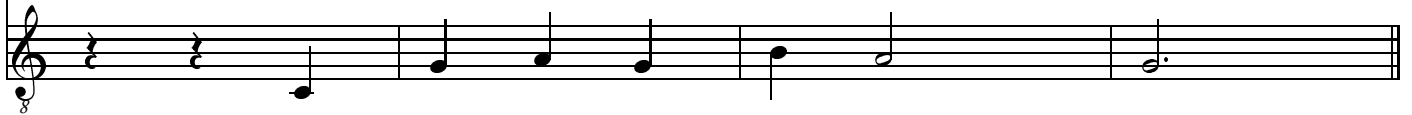
54



1.2.3. Al - le - - - lu - - - - ya,

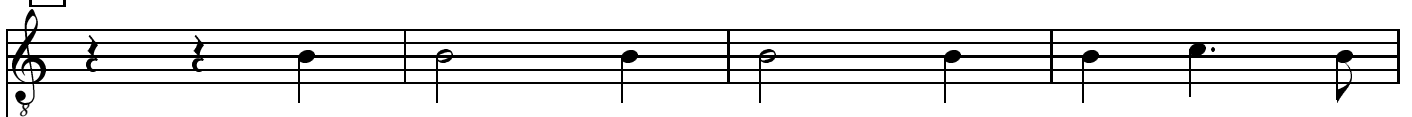


1.2.3. Al - le - - - lu - - - - ya,

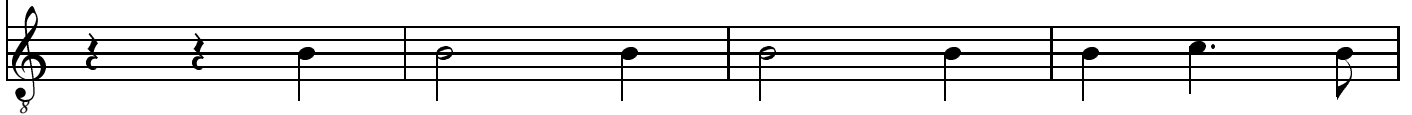


1.2.3. Al - le - - - lu - - - - ya,

58



1. For now is fre þat erst was
2. Of Ma - - ry mo - - der, ful of
3. Synge we ther - fore, both loude and

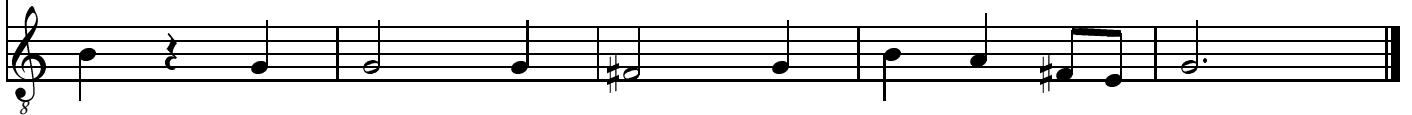


1. For now is fre þat erst was
2. Of Ma - - ry mo - - der, ful of
3. Synge we ther - fore, both loude and

62



bonde; we mowe wel synge, al - le - - lu - ya.
grace. Nowe synge we here, al - le - - lu - ya.
hye, al - le - - lu - ya al - le - - lu - ya.



bonde; we mowe wel synge, al - le - - lu - ya.
grace. Nowe synge we here, al - le - - lu - ya.
hye, al - le - - lu - ya al - le - - lu - ya.